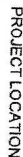
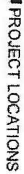

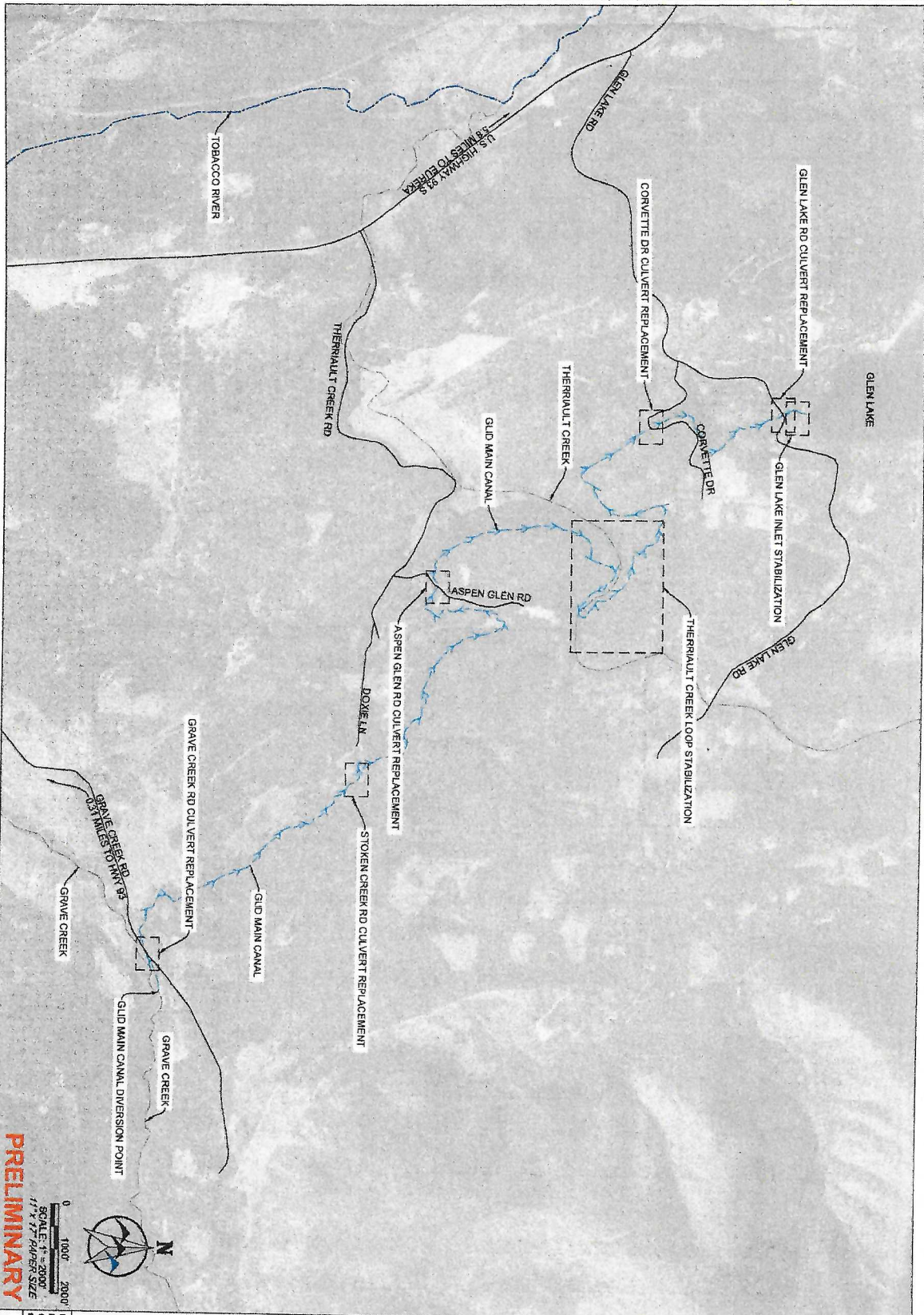


GLEN LAKE IRRIGATION DISTRICT MAIN CANAL IMPROVEMENTS



PRELIMINARY

PREPARED FOR: GLENN LAKE IRRIGATION DISTRICT		PROJECT NO. 2013-045 REVISION	
PREPARED BY:  WWC ENGINEERING		PROJECT NO. 2013-045 REVISION	
1725 MILWAUKEE STREET P.O. BOX 287 WILSONVILLE, OR 97150 (405) 343-3882 WWW.WWCENGINEERING.COM		PROJECT NO. 2013-045 REVISION	
DESIGNED BY: SLC DRAWN BY: SLC CHECKED BY: SH DATE: 09/25/2014		PROJECT NO. 2013-045 REVISION	
DRAWING NO. 1		PROJECT NO. 2013-045 REVISION	



PRELIMINARY

0 1000' 2000'

SCALE: 1" = 2000'

11" x 17" PAPER SIZE



DESIGNED BY: SLK
DRAWN BY: SLK
CHECKED BY: SH
DATE: 08/20/2024

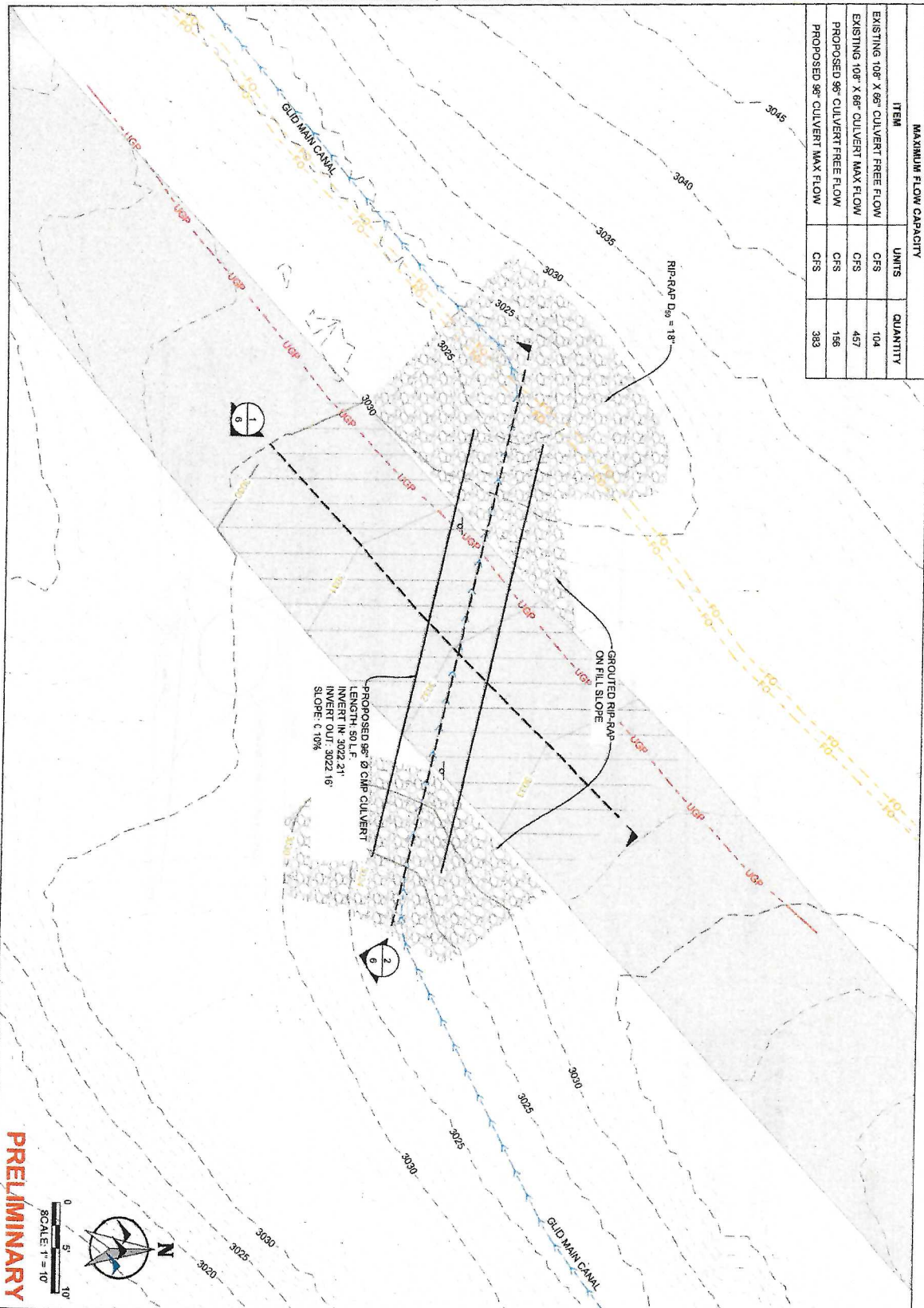
GLEN LAKE IRRIGATION DISTRICT
MAIN CANAL IMPROVEMENTS
OVERALL SITE PLAN
LINCOLN COUNTY, MONTANA

PREPARED BY	
-------------	--




1276 MAPLE STREET, SUITE F
HELENA, MT 59601
(406) 443-3982
www.wwcengineering.com

[illegible]



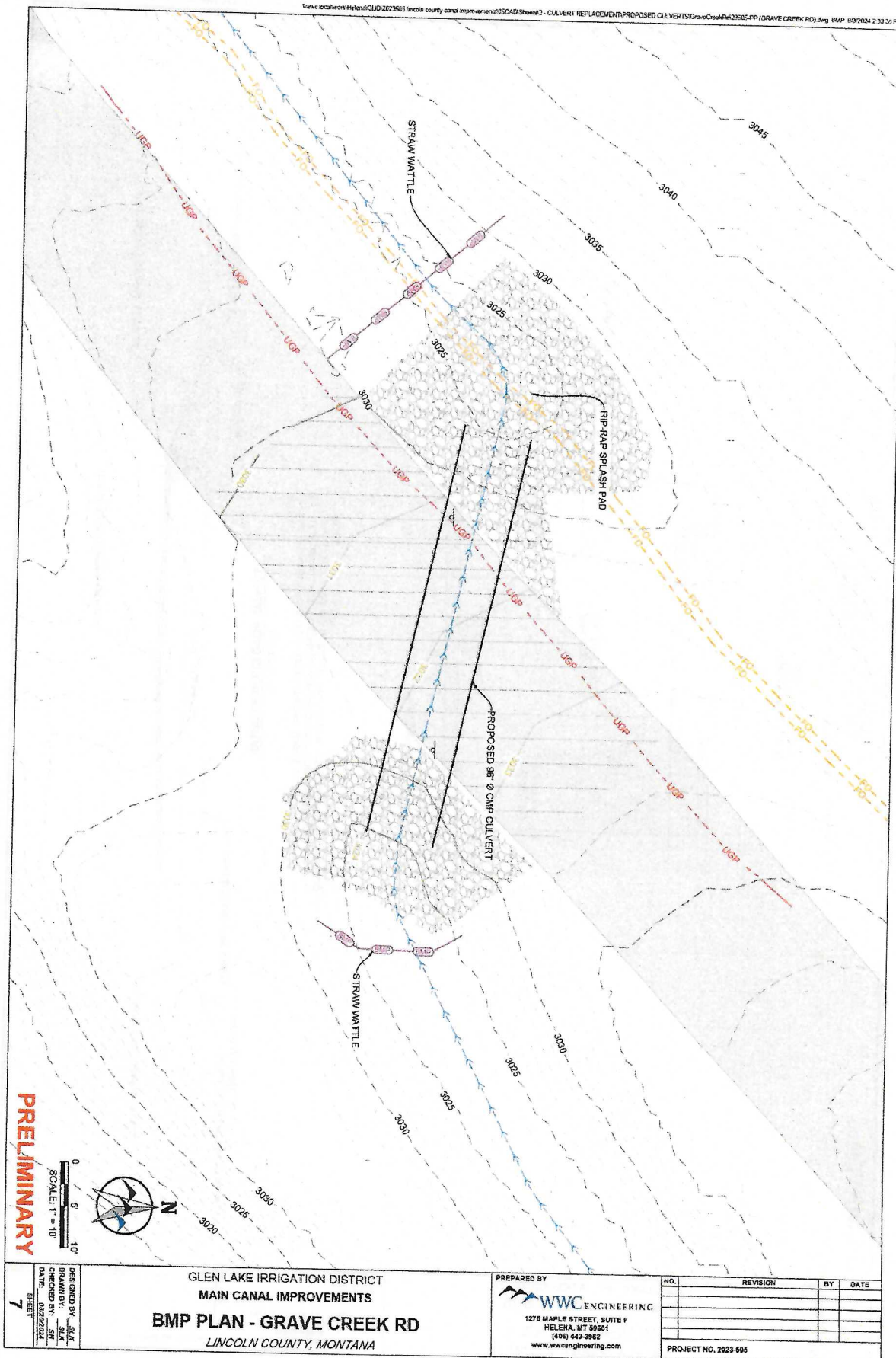
PRELIMINARY

DESIGNED BY: SLK DRAWN BY: SLK CHECKED BY: SLK DATE: 09/20/2024 SHEET 5	GLEN LAKE IRRIGATION DISTRICT MAIN CANAL IMPROVEMENTS PLAN - GRAVE CREEK RD LINCOLN COUNTY, MONTANA	PREPARED BY  WWC ENGINEERING 1275 MAPLE STREET, SUITE F HELENA, MT 59601 (406) 443-5962 www.wwcengineering.com	NO. REVISION BY DATE	
			PROJECT NO. 2023-005	

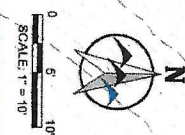
- 2 GRAVE CREEK ROAD CULVERT PROFILE VIEW
5 SCALE: NOT TO SCALE


9

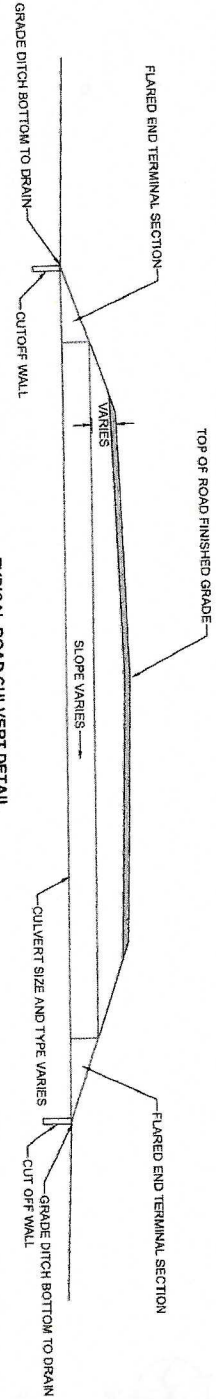
NO.	REVISION	BY	DATE
PROJECT NO. 2023-505			



PRELIMINARY



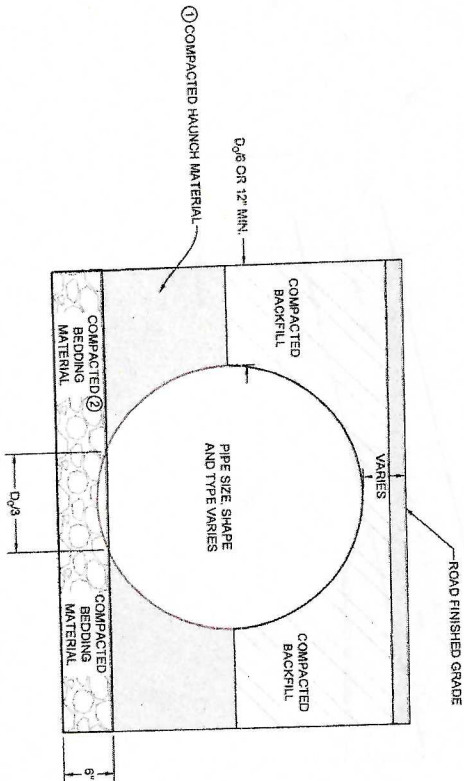
DESIGNED BY: JAL DRAWN BY: JAL CHECKED BY: JAL DATE: 09/27/2024 SHEET 7	GLEN LAKE IRRIGATION DISTRICT MAIN CANAL IMPROVEMENTS BMP PLAN - GRAVE CREEK RD LINCOLN COUNTY, MONTANA	PREPARED BY  WWC ENGINEERING 1276 MAPLE STREET, SUITE F HELENA, MT 59601 (406) 443-3862 www.wwcengineering.com	NO.	REVISION	BY	DATE
			PROJECT NO. 2023-606			



- NOTES:
1. CMP MINIMUM BURY DEPTH - 12" 2" FINISHED GRADE TO TOP OF PIPE.
 2. ALL ROAD CULVERTS INSTALLED W/ FLARED END TERMINAL SECTIONS PER MDT DRAWINGS 603-08 & 603-10. CUTOFF WALLS TO BE INSTALLED PER MDT DRAWING NO. 603-30

TYPICAL ROAD CULVERT DETAIL

NOT TO SCALE



CULVERT TYPICAL SECTION

NOT TO SCALE

- MATERIAL NOTES:
1. BACKFILL MATERIAL TO BE GM, SM, ML OR GC, SC WITH LESS THAN 20% PASSING THE #200 SIEVE.
 2. BEDDING MATERIAL TO BE SW, SP, GW, OR GP.
 3. NO PARTICLE LARGER THAN 1.0" TO BE WITHIN 12" OF THE PIPE.

PRELIMINARY

DESIGNED BY: SLK
DRAWN BY: SLK
CHECKED BY: SLK
DATE: 05/20/24
SHEET: 39

GLEN LAKE IRRIGATION DISTRICT
MAIN CANAL IMPROVEMENTS
CULVERT DETAILS
LINCOLN COUNTY, MONTANA

PREPARED BY
WWC ENGINEERING
1278 MAPLE STREET, SUITE F
HELENA, MT 59601
(406) 443-3982
www.wwcengineering.com

NO.	REVISION	BY	DATE
PROJECT NO. 2023-008			